

DCRL series



new

DCRL 3 - DCRL 5



EXP80 00

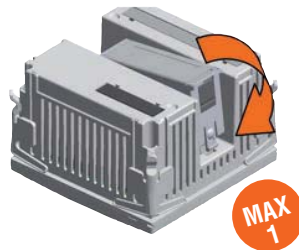


EXP 10...

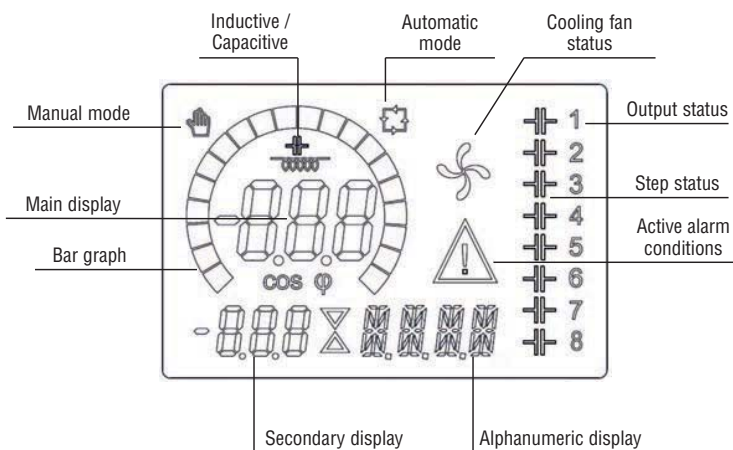
Order code	Steps	Flush-mount housing size	Qty per pkg	Wt
	n°	[mm/in]	n°	[kg]
Single and three-phase low and medium-voltage systems.				
DCRL 3	3	96x96/3.8x3.8	1	0.300
DCRL 5	5	96x96/3.8x3.8	1	0.350
Accessory.				
EXP80 00	Plastic insert for fixing customised labels		10	0.050

Order code	Description
EXPANSION MODULES	
Snap in fixing of only one module on DCRL... rear. Inputs and outputs.	
EXP10 06	2 relay outputs to increase number of capacitor steps
EXP10 03	2 relay outputs rated 5A 250VAC
Communication ports.	
EXP10 10	Opto-isolated USB interface
EXP10 11	Opto-isolated RS232 interface
EXP10 12	Opto-isolated RS485 interface

EXP... expansion module fixing
DCRL 3 - DCRL 5



Backlight icon LCD screen



General characteristics

DCRL series has been developed with advanced functionality and made with a dedicated ultra compact housing. It combines modern front design with mounting and expandability ease. The LCD screen provides a clear and intuitive user interface.

Main features include:

- Backlight icon LCD with excellent information viewing
- Alarm codes with scrolling tests, programmable in 6 languages (Italian, English, Spanish, French, German and Portuguese)
- Connection in single or three phase lines and co-generation systems with 4-quadrant operation
- Independent voltage measurement input which can be used in medium-voltage lines with VTs
- Extreme reduction of the number of switching operations
- Balanced use of steps with same power rating
- Reactive power measurement per step installed
- Capacitor over-current protection
- Panel over-temperature protection by internal sensor
- Accurate no-voltage release protection
- Extensive choice of available measurements, including voltage and current THD with single harmonic analysis up to 15° order.
- Wide voltage measurement range
- High accuracy measurement (TRMS)
- Front optical USB (with CX01 dongle) or Wi-Fi (with CX02 dongle) communication port for PC, smartphone and tablet connection
- DCRJ SW setup software
- Compatible with **Synergy** supervision software
- Front label customising facility.

Operational characteristics

- Voltage circuit:
 - Auxiliary supply: 100-440VAC
 - Frequency: 50/60Hz ±10%
- Voltage input:
 - Rated voltage: 600VAC L-L (346VAC L-N)
 - Frequency range: 45-65Hz
- Current input:
 - Single phase connection
 - Rated current: 1A or 5A configurable
- Measurement and control
 - Power factor adjustment: 0.5 ind to 0.5 cap
 - Voltage measurement range: 50-720VAC L-L; 50-415VAC L-N
 - Current measurement range: 0.025-1.2A for 1A full scale; 0.025-6A for 5A full scale
 - Type of voltage and current measurement: TRMS
- Relay outputs (steps)
 - DCRL3: 3 outputs
 - DCRL5: 5 outputs
 - Output arrangement: Normally Open (NO / SPST) contact; except the last being a changeover (SPDT)
 - Rated capacity: 5A 250VAC (UL/CSA B300 general use)
- Flush-mount housing: 96x96mm/3.8x3.8"
- IEC degree of protection: IP54 on front; IP20 at terminals.

Certifications and compliance:

Certifications obtained: EAC; UL Listing for USA and Canada (cULus - File E93601), as Auxiliary Devices - Power factor controllers.

Compliant with standards: IEC/EN 61010-1, IEC/EN 61000-6-2, IEC/EN 61000-6-3, UL508, CSA C22.2 n°14.

Contactors for power factor correction

See Section 2, page 14.

Synergy supervision software

See Section 27.

EXP series expansion modules

See Section 28, page 2.